

VS Wash Cartridge

rev.9/24

CAT#: TCC-CPW001-1

AVAILABLE SIZE: 1 Cartridge

STORAGE: Room Temperature, Light and Heat sensitive

SHIPPING: Room Temperature

DESCRIPTION:

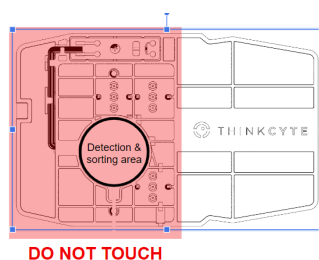
The VS Wash Cartridge is designed to deliver VS Clean to VisionSort as part of routine cleaning, typically performed at the end of an instrument run cycle. During instrument start-up, VS Sheath is run through the VS Wash Cartridge to prepare the instrument for sample runs. The VS Wash Cartridge does not require cartridge calibration, but can be used to calibrate instrument fluidics and prevent crystallization of sheath fluid within the instrument's microfluidics system. The VS Wash Cartridge is easy to install and reusable, promoting longer instrument lifetimes and high-quality analysis and sorting.

HANDLING INSTRUCTIONS:

1. Tear open the aluminum bag and remove the case containing the cartridge.



NOTE: Do not touch the cartridge near microfluidics, which can impact results.



UNITED STATES

1100 Island Drive, Suite 203, Redwood City, CA

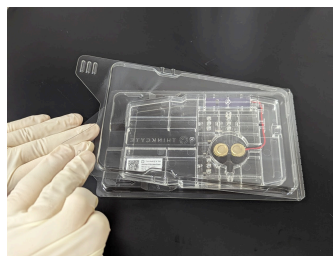
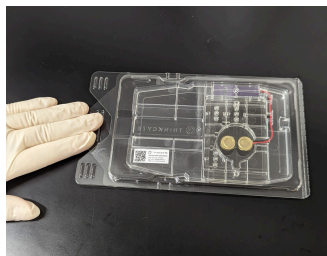
JAPAN

7-3-1 Hongo, Bunkyo, Tokyo

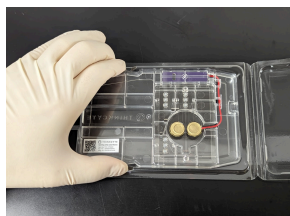
THINKCYTE.COM

Copyright © 2024 ThinkCyte, K.K.. ThinkCyte, Ghost Cytometry, and VisionSort are trademarks of ThinkCyte, K.K.. All rights reserved. For Research Use Only.

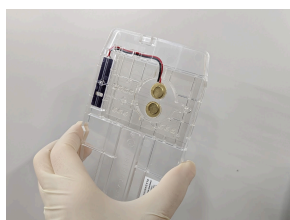
2. Place the case on a flat surface and while holding the middle rib with your hand, grab the left and right ribs to open it.



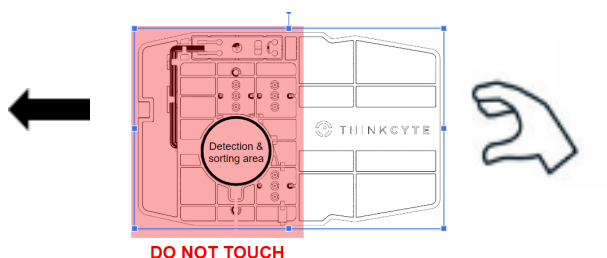
3. Place your finger in the groove of the tray and hold the tapered side of the cartridge and remove the cartridge from the casing.



4. Do not touch the function side.



5. Insert cartridge into the VisonSort system with the ThinkCyte label facing right side up. Following the washing procedure (and when otherwise not in use), place and store the wash Cartridge back in its original plastic protective casing to prevent damage to the Cartridge.


UNITED STATES

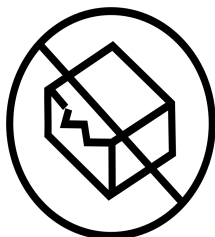
1100 Island Drive, Suite 203, Redwood City, CA

JAPAN

7-3-1 Hongo, Bunkyo, Tokyo

THINKCYTE.COM

Copyright © 2024 ThinkCyte, K.K.. ThinkCyte, Ghost Cytometry, and VisionSort are trademarks of ThinkCyte, K.K.. All rights reserved. For Research Use Only.



Caution
Do not use this product if its packaging bag is damaged.



Precautions for use

Do not bend, twist, or apply excessive force to the cartridge.
This cartridge is designed with a maximum usage of one week.
Extended use of a wash cartridge may compromise the instrument wash procedure.



If the cartridge has been stored in a different temperature environment, allow it to come to room temperature 30 minutes before use to prevent condensation from affecting the measurement results.

Avoid humidity and dust during use and storage.

To prevent damage to the cartridge exterior and interior, do not expose the cartridge to chlorinated or aromatic solvents, non-polar organic solvents, gasoline, grease, etc.



Keep cartridges away from fire, as they may burn.

Avoid exposing the cartridge to heat sources, as this may lead to deformation or damage. Temperatures exceeding 55°C may cause heat-induced damage.

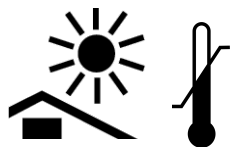
Do not touch the functional side of the cartridge (area indicated in the figure). Scratches, dirt, or blotches on the optical detection point will adversely affect the measurement results.

Biohazard



Liquids may contain biological materials, chemicals, or other chemical substances. Always wear protective equipment such as biological gloves, masks, safety glasses, and protective clothing when handling samples.

Follow your laboratory rules and local regulations and laws when disposing of used cartridges.



Storage

Store away from direct sunlight.
Recommended storage temperature range: 10 °C to 30 °C

UNITED STATES

1100 Island Drive, Suite 203, Redwood City, CA

JAPAN

7-3-1 Hongo, Bunkyo, Tokyo

THINKCYTE.COM

Copyright © 2024 ThinkCyte, K.K.. ThinkCyte, Ghost Cytometry, and VisionSort are trademarks of ThinkCyte, K.K.. All rights reserved.
For Research Use Only.